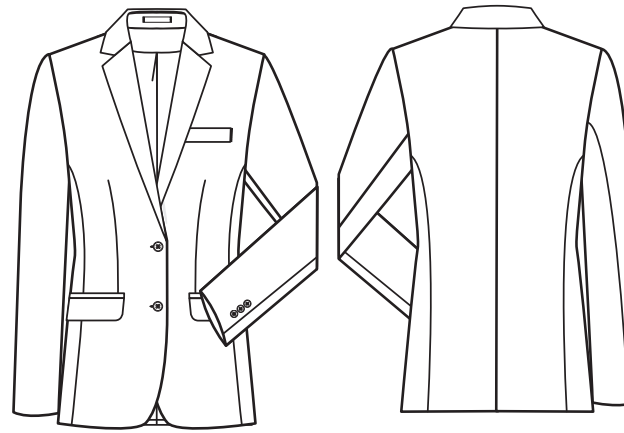


BASIC

Comfort Fit



STYLE

1414



GERMAN

DAMEN-LANGBLAZER

- Comfort Fit
- 2-Knopf
- 2 Pattentaschen
- 1 Brustleistentasche
- 1 Reißverschluss-Innentasche
- Rückenlänge 68 cm | Gr. 38
- **GRÖSSEN:** 34-52

ENGLISH

LADIES LONG BLAZER

- comfort fit
- 2-button
- 2 flap pockets
- 1 breast welt pocket
- 1 zip pocket inside
- back length 68 cm | size 38
- **SIZES:** 34-52

FRENCH

BLAZER LONG FEMME

- Comfort fit
- 2 boutons
- 2 poches à rabat
- 1 poche poitrine
- 1 poche intérieure zippée
- Longueur dos 68 cm | taille 38
- **TAILLES :** 34-52

DUTCH

DAMES LANGE BLAZER

- comfort fit
- 2 knoops
- 2 klepzakken
- 1 borstzakje
- 1 binnenzak met ritssluiting
- ruglengte 68 cm | maat 38
- **MAAT:** 34-52

NR: 1414.7000.010 SCHWARZ
NR: 1414.7000.011 ANTHRACIT
NR: 1414.7000.020 MARINE

NO: 1414.7000.010 BLACK
NO: 1414.7000.011 ANTHRACITE
NO: 1414.7000.020 NAVY BLUE

RÉF : 1414.7000.010 NOIR
RÉF : 1414.7000.011 ANTHRACITE
RÉF : 1414.7000.020 BLEU MARINE

NR: 1414.7000.010 ZWART
NR: 1414.7000.011 ANTRACIET
NR: 1414.7000.020 MARINE

GEWEBE: 54% Polyester, 44% Schurwolle, 2% Elasthan, 235 g/m²
FUTTER: 100% Polyester

PFLERGE:     





FABRIC: 54% polyester, 44% virgin wool, 2% elastane, 235 g/m²
LINING: 100% polyester

CARE:     



TEXTILE : 54 % polyester, 44 % laine vierge, 2 % élasthane, 235 g/m²
DOUBLURE : 100 % polyester

ENTRETIEN :     



DOEK: 54% polyester, 44% scheerwol, 2% elastaan, 235 g/m²
BINNENVOERING: 100% polyester

ONDERHOUD:  